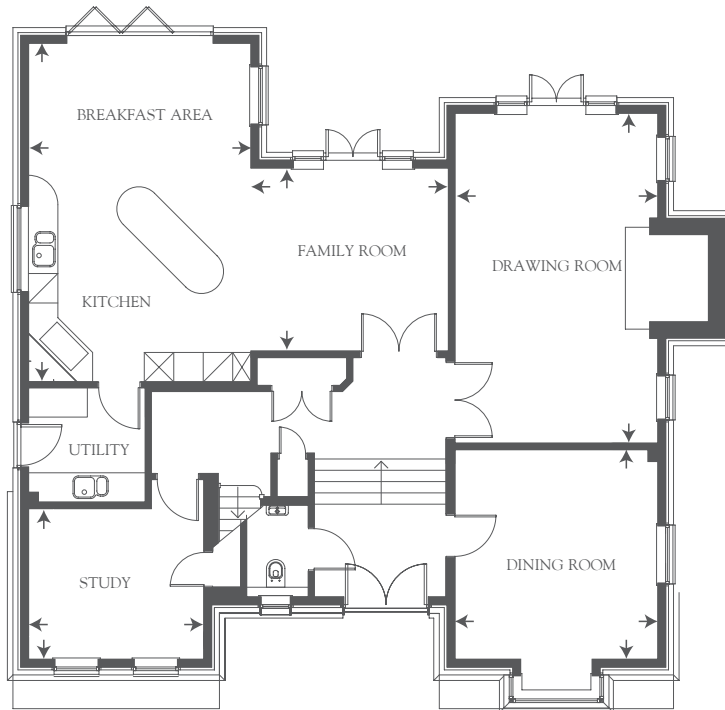


# PLOT 1 - FINDON HOUSE

## GROUND FLOOR



### DRAWING ROOM

6724mm x 4138mm (22'1" x 13'7")

### FAMILY ROOM

4020mm x 3734mm (13'2" x 12'3")

### KITCHEN / BREAKFAST AREA

6899mm x 4534mm (22'8" x 14'11")

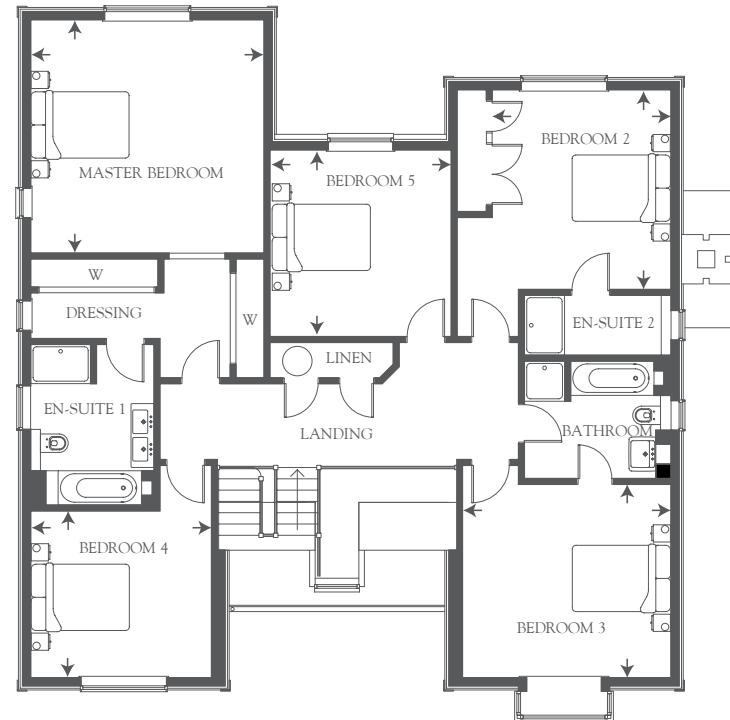
### DINING ROOM

4274mm x 4138 (14'0" x 13'7")

### STUDY

3574mm x 3074mm (11'9" x 10'1")

## FIRST FLOOR



### MASTER BEDROOM

4754mm x 4754mm (15'7" x 15'7")

### BEDROOM 2

4069mm x 3643mm (13'4" x 12'0")

### BEDROOM 3

4248mm x 3940mm (13'11" x 12'11")

### BEDROOM 4

3684mm x 3399mm (12'1" x 11'2")

### BEDROOM 5

3804mm x 3694mm (12'6" x 12'2")

Please note that the floor plans and dimensions shown are for guidance purposes only and do not form part of any offer or contract and should not be used for carpet/curtain sizes etc. The illustration shows plot 1 in a mature setting and is for general guidance only.